

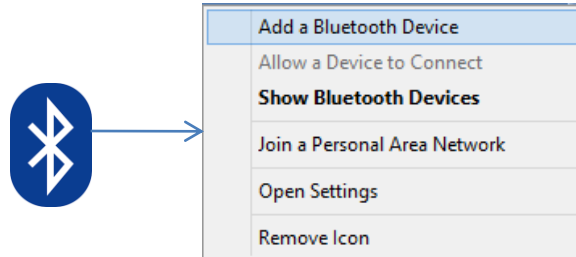
## How to pair Phiro Pro Bluetooth with PC Bluetooth?

**Step 1:** Switch on Phiro Pro, Go to Bluetooth Mode by pressing Mode button.

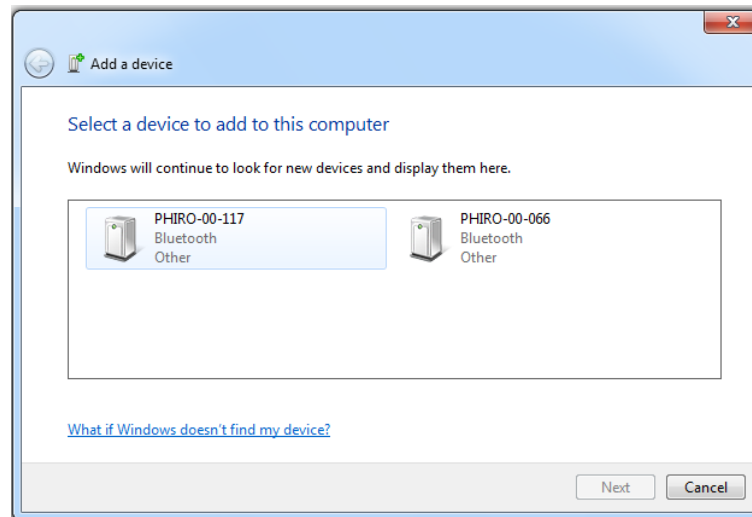


# How to pair Phiro Pro Bluetooth with device Bluetooth?

**Step 2:** Click on **Bluetooth** icon & select **Add Bluetooth Devices** in System.

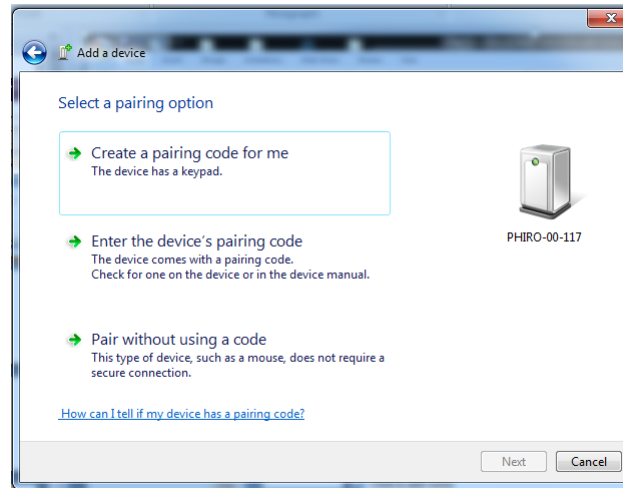


**Step 3:** Select the **Phiro Bluetooth device** and press the **Pair** button.

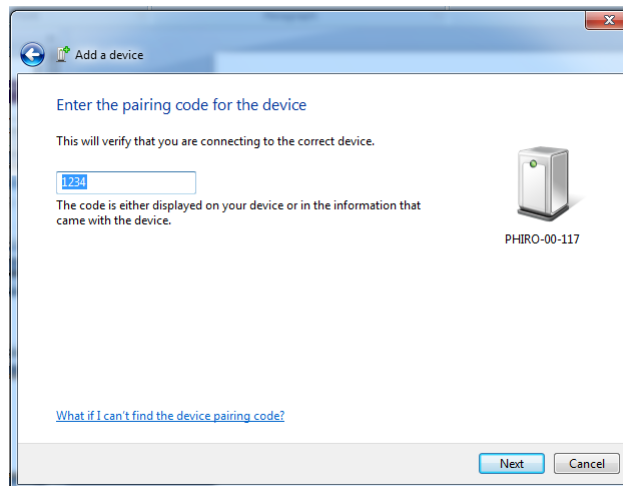


# How to pair Phiro Pro Bluetooth with device Bluetooth?

**Step 4:** Click on the **Phiro Bluetooth device** and select “Enter the device’s pairing code”.



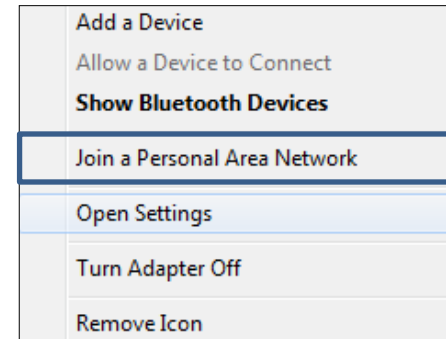
**Step 5:** Enter the pass code “**1234**” and then press **Next** to pair to the Phiro.



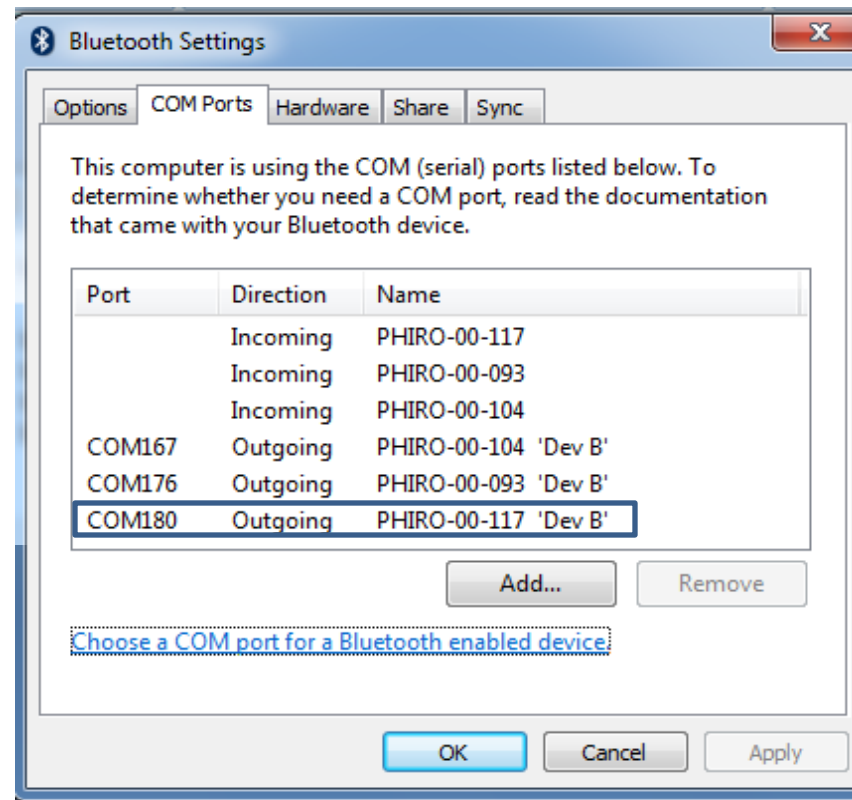
**Note:** Wait for Phiro Bluetooth to pair with System Bluetooth.

# How to Connect Phiro Bluetooth with Scratch4Phiro Software?

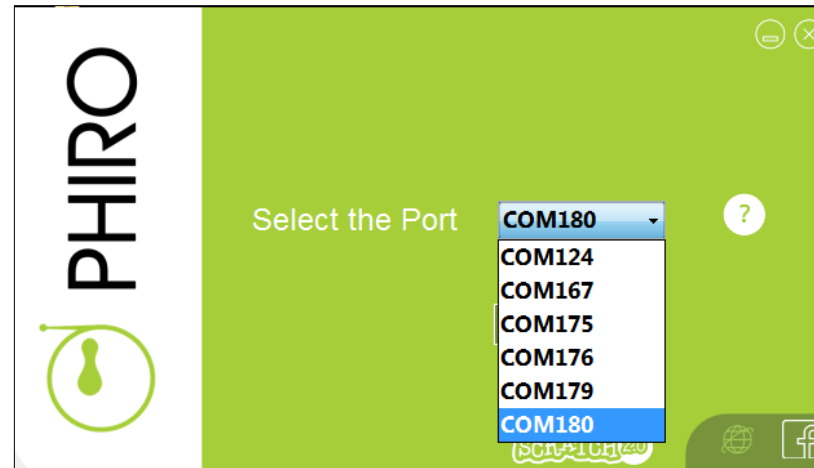
**Step 1:** Click on **Bluetooth** icon & select **Open Setting** in System.



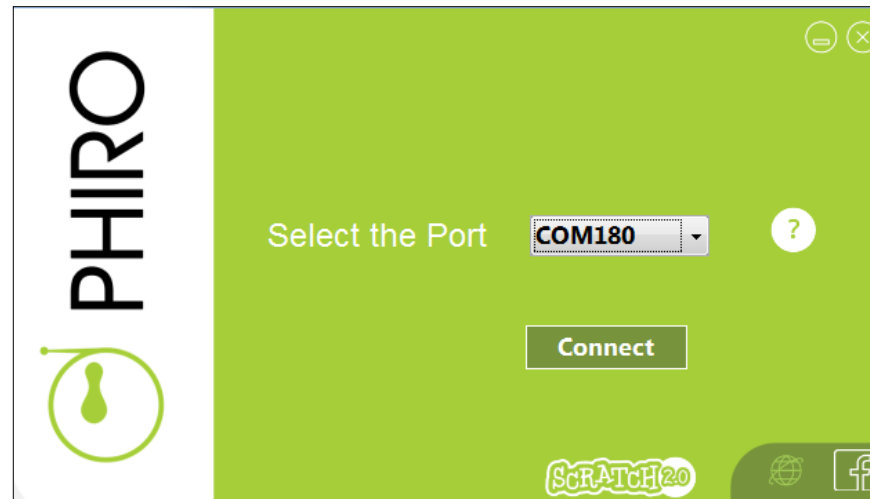
**Step 2:** Click on **COM Port** icon & select **Open Setting** in System.



**Step 3:** Open “Scratch4Phiro” software and click on “**COMPORT**” selection and select correct “**COMPORT**” .



**Step 4:** After Port Selection, Click on “**Connect**”



**PLAY, CODE & INNOVATE**  
with  
**Phiro & Scratch!!!**

# PHIRO FAQ's



- **Where can I find my Phiro Pro robot Bluetooth name?**

Unique Serial number & Bluetooth Name are same and it has been specified under each Phiro Robot.

Unique Serial number & Bluetooth Name will be of following format – **“PHIRO PRO 12345”**

- **What should I do if Phiro Pro robot disconnects communication with Windows PC or Android Smartphone?**

Make sure Phiro is in Bluetooth (M3) mode. Even then if Phiro is not connecting, restart Phiro & software.

- **Can I use same Phiro Pro with different systems?**

Yes, we can use same Phiro in different system. We have to Pair Phiro with each system individually.

- **Is "COM PORT" number of same Phiro Pro robot will be same for all system?**

No, it will differ for each system. It depends on available port in that respective system. Please note the "COM PORT" number when Phiro Bluetooth pair with system Bluetooth driver.